

Core teams

The QPA has a number of officers and teams that provide specific support services both internally and for members.

The Secretariat

The QPA has dedicated staff supporting the administration of the Association. Alongside organising committee papers, agendas and minutes, the team also handles the financial management of the QPA.

Health & Safety

The vibrancy and effectiveness of the QPA is well demonstrated in its mission to foster and maintain a culture of health and safety amongst members, with the ultimate goal of eliminating occupational accidents and ill-health.

As the first co-signatory with the Health & Safety Commission to the Hard Target initiative, the QPA was in the vanguard of the Industry's pledge to halve reportable accidents by 2005. In fact the target was beaten significantly with a 73% reduction recorded. Buoyed by this performance, but with an overarching target to reach zero accidents, QPA members have committed to a further 50% reduction by 2009.

There are a number of memorable health and safety initiatives stemming from QPA beyond the Hard Target. Launched in 2006, the www.safequarry.com website is now the hub of health and safety best practice for the industry allowing users to learn and share all the latest tips and guidance to help further improve performance. Every stride forward in our health and safety performance is

celebrated at the annual Best Practice Awards, which bestow prizes on the companies and individual sites that have showed the greatest innovation and progress in tackling health and safety issues.

Environment and Mineral Planning

Raw materials are the lifeblood of the quarrying industry - but without planning permissions for extraction they are worthless. While members pursue their own applications, QPA's planning specialists help them to address the wider issues that determine whether permission is granted.

Through its executives and with the support of the members who contribute to its work, the QPA's planning service draws on the best available resources in the business. Their work is widely respected within Government and local authorities and covers planning issues throughout England, Wales and Scotland.

The planning service operates in several ways, including consultation with members on local development plans to establish allocations for future mineral workings. The team acts as a focal point for industry comment on major changes in policy and legislation. We also contribute to the ten Regional Aggregates Working Parties that help to shape government minerals policies in England and Wales by undertaking surveys which help to ensure that the industry's case on planning issues is soundly-based. The planning team also jointly runs with the Royal Town Planning Institute an annual seminar that has become

the leading forum for debate on minerals planning issues.

The QPA's work on environmental policy has been increasing in importance in recent years, with water and waste issues gaining a particularly high profile. By responding to government consultations on environmental issues for the Association, the QPA has the ability to lobby for a fair deal for industry and the creation of realistic policy. Environmental standards in the industry have improved a great deal over the last ten or fifteen years, but too often quarrying is judged against outdated standards. Outside of its lobbying role, the QPA also works to promote good environmental practice and guidance against key topics such as Bio and Geodiversity and restoration. In Northern Ireland, the QPA has a dedicated biodiversity officer who has helped raise the profile of our contributions to the environment significantly in recent times.

Public Affairs & Communications

Communication is one of the QPA's fundamental responsibilities - and one of its particular strengths. Its aim is to build bridges with each of the industry's key audiences - from government ministers through to schoolchildren as well as internally with its own members.

The Association runs an active public affairs programme, closely monitoring and contributing to parliamentary activity in Westminster, Edinburgh, Cardiff, Belfast and, increasingly, Brussels. It similarly monitors

select committees and parliamentary interest groups, and talks regularly to civil servants in key departments.

From this understanding of government come campaigns on specific issues such as the aggregates levy, the use of reprocessed fuel oils, birdstrike issues and the mining waste directive, the latter of these proving a major victory in Europe for the Association. All of the key issues on which QPA is currently concentrating are available for review for every member of the QPA through the dedicated service on the secure members' website.

With virtually every constituency having an aggregate plant or allied operation, a close contact programme is maintained with MPs and their advisers at both parliamentary and constituency level. Members are encouraged to organise site visits and to meet politicians at the QPA stands at party conferences.

The Association's communications team also provides an interface with the media at all levels, responding to requests for comment



and information and proactively making the case for the industry. The team also develops stakeholder engagement tools, such as the Make The Link campaign, the award-winning Virtual Quarry resource and the groundbreaking work on safety with teenagers.

The QPA magazine Quarrying Today is targeted at external audiences but is widely read by members who also receive monthly newsletters and regular briefings. Other key events include the annual Showcase that attracts some 400 members and guests from political audiences, regional lunches and a stand at the Hillhead quarrying industry exhibition in Derbyshire.

The team is also responsible for developing the QPA's Sustainable Development Policy, widely regarded as one of the best of its kind within British industry. It strives to increase participation in the scheme so that we can all understand the impact of the industry in unparalleled detail.

Market Information

The QPA is a major source of statistical and market information, not just for its members but for government, media and a host of others who need to track the industry.

QPA collects base data from its members and from a variety of other established sources and then feeds the resulting analysis to those who need it.

On the product front, it publishes regular market analyses that help to inform crucial

investment and other business decisions for its members. While important as the basis for its own campaigns, QPA statistics are also valued by Government in the development of new minerals planning guidelines.

Event Management

With a full roster of events taking place throughout the year, a dedicated Events Manager has the responsibility for organising our high-profile events and liaising with members and external guests to ensure everything runs smoothly.

The services shown above are just a cross-section of a far wider portfolio of support that we offer our members. Visit the QPA's websites to find out more about our work with both QPA members and stakeholders alike.

www.qpa.org - public website
<http://members.qpa.org> - secure members-only website

The Quarry Products Association's Structure





A guide to the QPA's Committees

QPA Scotland, Northern Ireland and Wales

The QPA's three UK offices outside London host regular meetings amongst their members to tackle issues with localised expertise. Chairmen from the Scotland, Northern Ireland and Wales report to the QPA Council.

English Regions

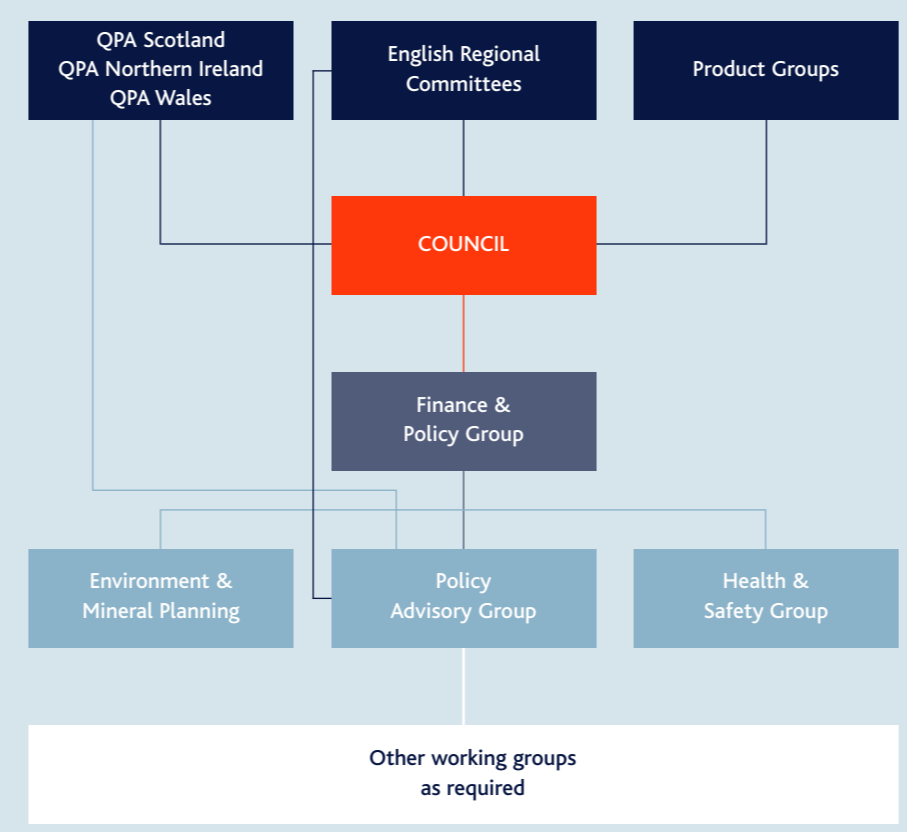
The QPA's five English regions discuss the full raft of industry matters before recommendations are drawn up for the Chairman to feed into national policy groups and the QPA Council.

Product Groups

Formed of product experts from the companies that the Association represents, these groups discuss specific issues affecting operators involved in the broad range of products within the QPA's remit. These groups then report into the QPA Council to advise of any possible national policy implications for the industry.

Council

The Council is QPA's board of directors and currently meets twice a year in London. It is formed from the Chairmen from each of the QPA's regional committees, including Scotland, Northern Ireland and Wales, alongside the Chairs of the Association's sub committees, and other senior executives. QPA Council



ratifies proposals made by its contributing committees, including shaping the direction of our policy, approving new member applications and ultimately deciding what the member companies should collectively commit to doing as an association.

Finance and Policy

This committee clarifies and reviews important policy decisions from across the QPA's remit before they are ratified by Council. It also oversees the QPA's financing. The group is formed of Managing Directors from across the QPA's Full membership.

Environment and Mineral Planning

A specialist committee formed of planning and environmental professionals from across the QPA membership which again proposes appropriate policy to the F&P group. Its primary function is to protect QPA members' Licence to Operate by tackling key issues ranging from waste management through to the regulation that governs the granting of new mineral permissions.

Policy Advisory Group

PAG is the first national port of call for policy decisions. The group is formed from key policy managers from both small and large QPA member companies. The group ensures a consistent approach on policy-making for the Association before making recommendations to F&P. The group also hears views from the QPA's regional chairmen.

Health and Safety

The Health and Safety Committee, formed of senior H&S specialists from our member companies, recommends policy that will help industry continue to improve its health and safety record. The group also examines regulation from bodies such as the Health and Safety Executive and considers how best the industry can manage these changes.

The QPA's officers - structure

The QPA's officers are organised into two broad groups: firstly one that focuses on core work such as public relations, economics, public affairs, health and safety and planning. Secondly there are a series of product-specific officers that work exclusively in the interests of the members they represent. Alongside our aggregates groups here is an outline of the other product groups (in some cases, these are sometimes referred to as constituent bodies):

Agricultural Lime Association (ALA)
Represents nine producers whose main focus is the promotion to farmers of natural quarried lime as one of the foundations of good soil husbandry.

British Lime Association (BLA)
Represents six members who between them produce some 1.6 million tonnes of industrial lime each year for use in steel manufacture, mortars, treatment of power station flue gases, soil stabilisation and other industrial processes.

British Marine Aggregate Producers Association (BMAPA)
Represents an industry that contributes around seven per cent of Britain's primary aggregate needs. BMAPA has ten members operating 25 dredgers in UK waters.

British Ready Mixed Concrete Association (BRMCA)
Ready-mixed concrete from BRMCA members within the QPA is made "offsite" in one of approximately 1,100 plants across the nation. The average delivery distance is less than 30 miles, making the product one of the most sustainable construction products.

Mortar Industry Association (MIA)
Represents eight companies involved in factory-produced mortars and operates an information service to encourage and support wider use.

QPA Asphalt
The QPA has two asphalt experts working at its London office. As the surface for some 95 per cent of our roads - as well as playgrounds, footways, car and lorry parking areas, airport runways and much more - asphalt is uniquely versatile. The industry produces more than 26 million tonnes of asphalt every year.

Silica and Moulding Sands Association (SAMSA)
Represents 10 companies who between them produce approximately four million tonnes of silica sands each year. The materials are used for the manufacture of glass, foundry moulds and a host of industrial applications.

Gillingham House
38 - 44 Gillingham Street
London SW1V 1HU
Tel 020 7963 8000
Fax 020 7963 8001
info@qpa.org
www.qpa.org

By Car
Nearest parking available at Victoria Coach Station.

Please note Gillingham House is situated within the London Congestion Charge Zone.

By Rail
Leave Victoria Station via Exit 2 onto Wilton Road or through Victoria Place Shopping Centre to Eccleston Bridge and turn left into Belgrave Road.

The QPA operates from a head office in London and two regional offices in Glasgow and near Belfast, with dedicated officers also working across Wales.

With around thirty officers, all specialising in different elements of industry, from health and safety to technical product expertise, the QPA is organised in the most effective way to serve its membership. This document introduces the various teams and panels that form the Association's core.